

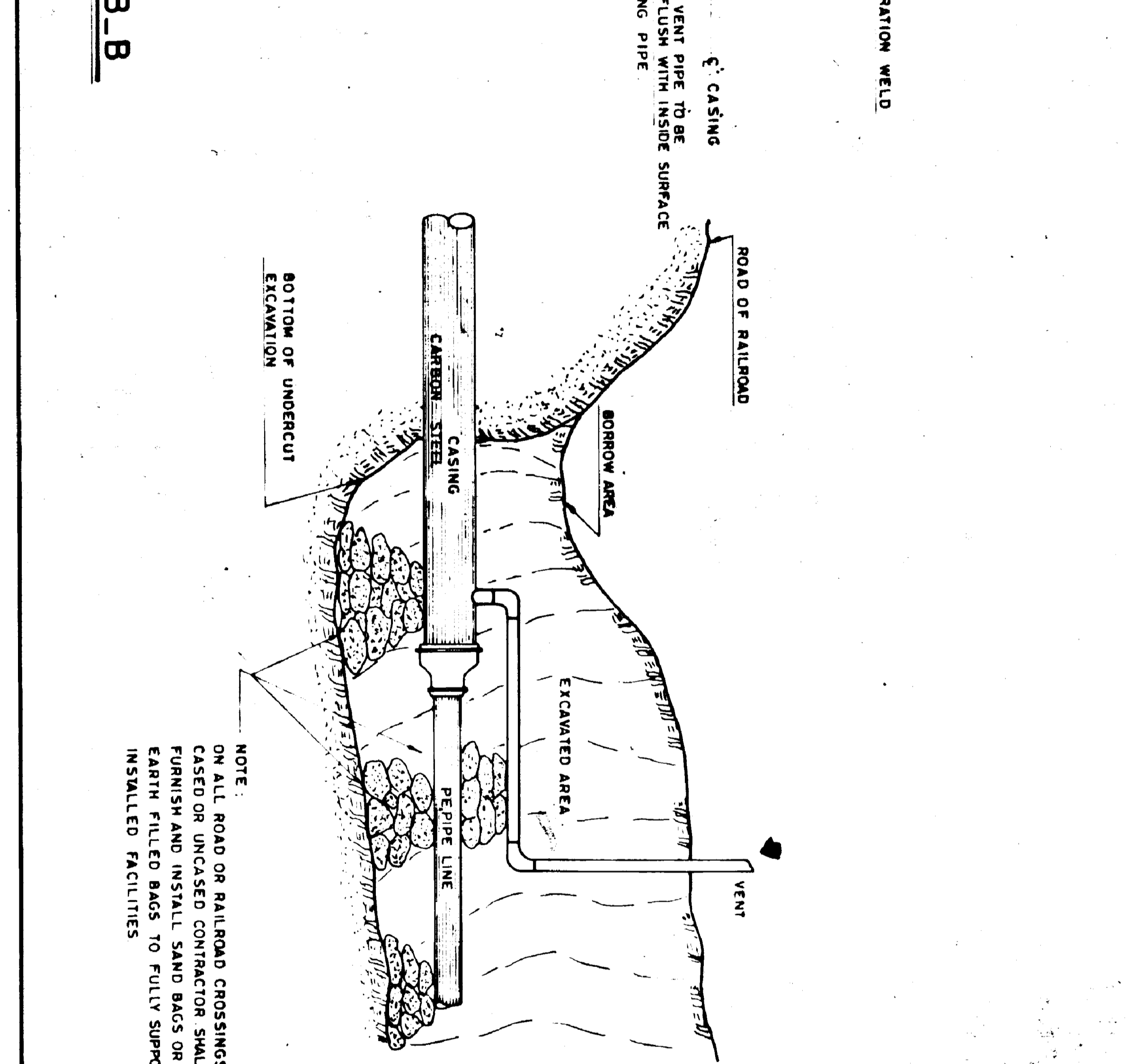
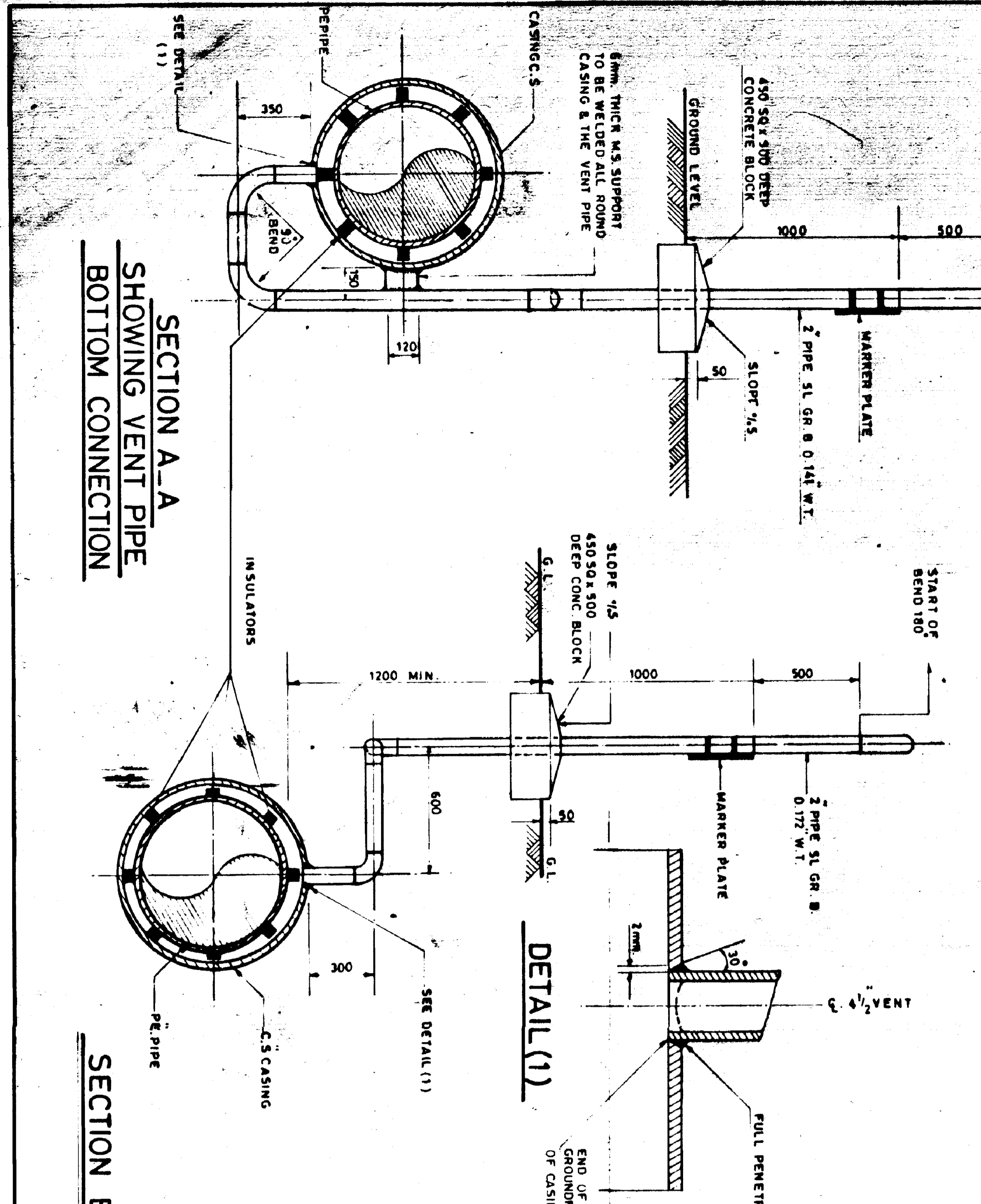
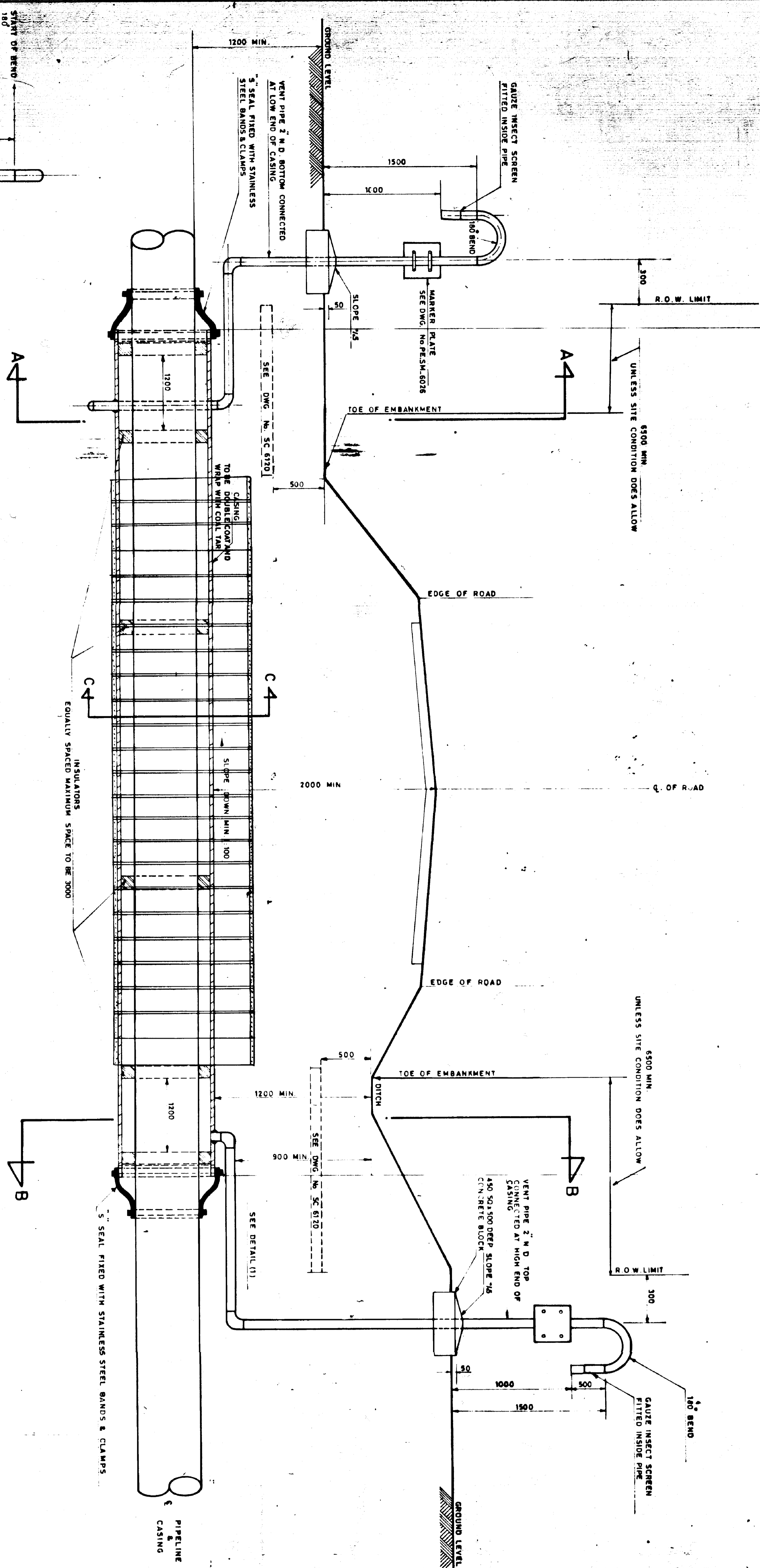
LENGTH OF CASING IS SPECIFIED ON BILL OF MATERIAL FOR EACH CROSSING SEPARATELY

GENERAL NOTES

- 1 - CASING SHALL BE FREE OF BURRS AT WELDS. VENT PIPES SHALL BE INSTALLED BEFORE INSERTION OF CARRIER PIPE.
- 2 - BEFORE INSERTION THE EDGE OF THE CASING SHALL BE SUITABLY COVERED TO ELIMINATE THE POSSIBLE DAMAGES TO POLY ETHYLENE PIPE WHILE INSERTED.
- 3 - PRIOR TO INSTALLATION OF END SEALS CARE SHALL BE TAKEN TO ENSURE THE INSIDE OF THE CASING IS DRY.
- 4 - CASING PIPE TO BE DOUBLE COAT AND WRAP. VENT PIPE TO BE SIMILARLY TREATED TO A HEIGHT OF 300 mm ABOVE GROUND LEVEL.
- 5 - ALL DIMENSIONS ARE IN MILLIMETRES UNLESS OTHERWISE STATED.
- 6 - EACH CASING END SHALL HAVE A MINIMUM DISTANCE OF 8 METER FROM THE CENTER LINE.
- 7 - THE CASING SHALL BE SUPPORTED FOR ITS ENTIRE LENGTH AND SHALL BE LAID SO AS TO SLOPE SLIGHTLY.
- 8 - CASING SHALL BE FREE OF ICICLES AT WELDS. HOLES IN CASING PIPE FOR VENTS SHOULD BE PREPARED AND VENTS WELDED IN BEFORE INSERTION OF CARRIER PIPE.
- 9 - EXPOSED PIPES SHALL BE PAINTED IN ACCORDANCE WITH N.I.G.C. SPECIFICATION (YELLOW)
- 10 - BACKFILL OVER CASING SHALL BE PLACED IN 6 LAYERS AND PNEUMATICALLY TAMPED TO REACH THE DENSITY OF UN-DISTURBED SURROUNDINGS AND SURFACE MATERIAL SHALL BE RESTORED TO ORIGINAL CONDITION.

REFERENCE DRAWINGS

DWG No.	TITLE
PSM. 6026	STANDARD DETAILS OF MARKER PLATE AT CASED CROSSINGS
SC. 6120	CONCRETE WARNING SLAB



P.E. CARRIER PIPE O.D (mm)	CASING API 5L GR. B O.D (IN)	PIPE WT (IN)	VENT API 5L GR. B O.D (IN)	INSULATOR SPACE METER
90	6 5/8	0.172	2 3/8	3.0
110	6 5/8	0.172	2 3/8	3.0
125	6 5/8	0.172	2 3/8	3.0
160	8 5/8	0.188	2 3/8	3.0
200	10 3/4	0.219	2 3/8	3.0

NO CONSTRUCTION PERMITTED UNLESS THIS DRAWING IS APPROVED	
REV.	DESCRIPTION
A	DESIGN
B	CHECK
C	DATE
D	APP.
E	DATE
F	DATE

ROAD OR HIGHWAY CASSED CROSSING

**NATIONAL IRANIAN GAS COMPANY**

ENGINEERING AND TECHNICAL SERVICES AFFAIRS

POLYETHYLENE GAS DISTRIBUTION NETWORK

STANDARD

DESIGNED BY: F. GHANI

DATE: KHOR 55

DRAWING No. **PE-SM-6923**

